

## 3 PROTECTION tile grout: Resistant to mildew, black moss, and bacteria

- Resistant to mildew, black moss, and bacteria with biocide mildew-resistance content ideal for use in wet-prone areas such as kitchen, bathroom,...
- Our Multicolor collection transforms joints into vivid & artistic lines when combined with different tile types and colors.
- A combination of many preeminent features:
  - Resistance to general cleaning agents for a durable and beautiful look that withstands the test of time.
  - Creating no scratches to tile surfaces when mopped and cleaned
  - No cracks guaranteed for 1- 6 mm wide joints
- In compliance with **LOW VOCs standard** - safe for user's health

### SPECIFICATIONS AND STORAGE

**Packaging:** 1 kg/pack

**Colors:**



Multicolor collection  
(Refer to next page)

**Shelf life and storage:**

Within 1 (one) year from the manufacturing date if kept in the original packaging and stored at a dry, well-ventilated place. Opened packages must be properly fastened and stored at a dry, well-ventilated place, and would require checking before use.

**Application:** Grouting joints for ceramic, porcelain, terracotta, glaze mosaic, marble, and other natural stone tiles.  
For interior areas, especially wet areas such as bathrooms, kitchens

### QUALITY CERTIFICATION\*

### SPECIFICATIONS

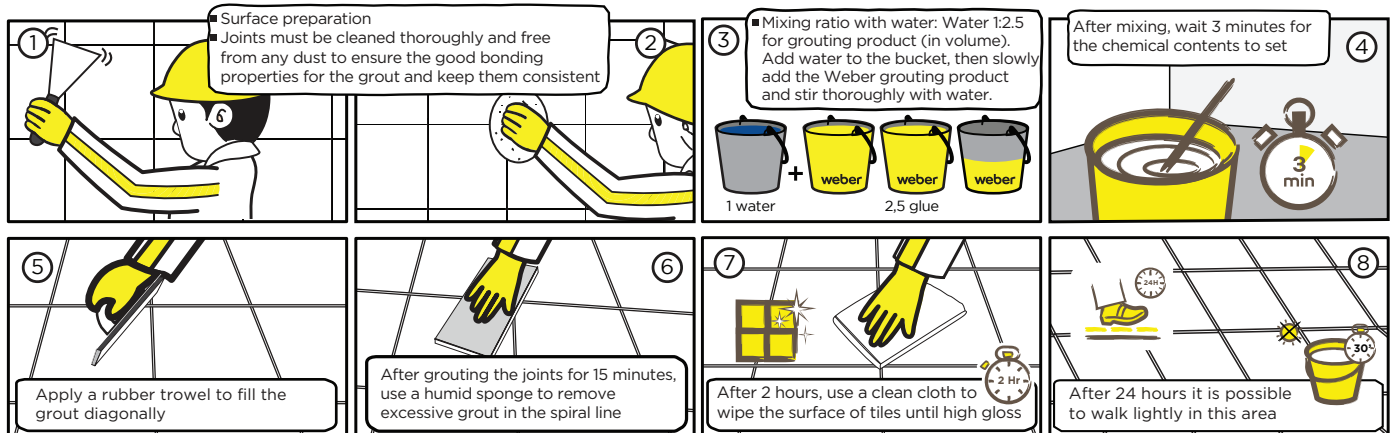
Specs	webercolor power
Average consumption rate*	-1 kg/5 m <sup>2</sup>
Specific weight	-0.9 - 1.1/g cm <sup>3</sup>
Time for the chemical ingredients to take full effect	3 - 4 minutes
Time for mixing and use	30 minutes
Setting time for grouting after installation of tiles	24 hours
Joint width	1 - 6 mm
Floor setting time before allowing traffic	24 hours

\*Rates are for reference only. Actual consumption rates may vary depending on the construction method, joint width, and tile thickness.

	Standard	webercolor power	Test method
Abrasion resistance	≤ 2,000 mm <sup>3</sup>	Pass	IISO13007 part 4-4.4 and EN 12808-2
Flexural strength	≥ 2.5 (N/mm <sup>2</sup> )	Pass	ISO13007 part 4-4.1.3 and EN 12808-3
Compressive strength	≥ 15 (N/mm <sup>2</sup> )	Pass	ISO13007 part 4-4.1.4 and EN 12808-3
Shrinkage	≤ 3.0 (N/mm <sup>2</sup> )	Pass	ISO13007 part 4-4.3 and EN 12808-4
Water absorption after 30 minutes	≤ 5.0 g	Pass	ISO13007 part 4-4.2 and EN 12808-5
Water absorption after 240 minutes	≤ 10.0 g	Pass	ISO13007 part 4-4.2 and EN 12808-5

\*Note: All above results are experimental at the Lab and may vary due to different construction conditions and methods at the construction site.

## CONSTRUCTION METHOD



## APPLICATION NOTE FOR TILE/STONE

- Use the tile grout mixture entirely within 30 minutes after mixing and avoid putting it under direct sunlight.
- Avoid using tile grout on too hot substrates. While working under direct sunlight, use sunlight-proof shields to cool down the ambient temperature.

## HEALTH SAFETY INFORMATION

- The product contains cement which may cause an allergic reaction on contact. Direct contact with wet mortar may cause dermatitis, burning, or irritation. Contact with the product via high excretion of body fluids (e.g. sweating or tearing) may also cause dermatitis, burning, or irritation.
- Avoid direct contact with skin or eyes. Limit activities that cause dust and avoid breathing in dust directly when applying.
- Wash thoroughly with plenty of clean water when the product comes in contact with the body.
- Wear protective gloves and goggles when working.
- Keep the product out of children's reach.

## COLOR CODES REFERENCE\*



\*The above colors are for indication only, compared to the actual product color as allowed by the printing technique.

### Disclaimer:

The information related to Weber products is provided and recommended based on our knowledge and experience under proper storage, testing, and use conditions. In actual application, due to differences in materials, aggregates, and actual site conditions, we cannot guarantee any particular purposes of the product, or any liability for the information, recommendations, or advice from our part. Users need to consult the latest documentation provided as well as check the suitability of the product for the desired application purpose.