



## Super Premium Tile/ Stone adhesive

- Product is formulated to be in compliance with C2S1 class of National Standard TCVN 7899-1:2008 for mortar, tile and stone adhesive.
- Withstands all weather conditions, pressure, and vibration for a short time.
- Specialized for areas subject to heavy loads and vibrations, high traffic density.
- Suitable for areas with high-pressure conditions such as saunas, spas, ...
- Suitable for tiling on special surfaces such as wood, gypsum board, fiber cement board, old brick surface in the exterior area, concrete block, AAC, ALC, ...
- Tiling with all types of bricks/stones of all sizes.
- In compliance with **GREENGUARDS**, **Low VOCs** standard - safe for users' health.

**Ingredients:** Sand, cement, and other additives.

### Application:

Suitable for all types of bricks of all sizes.

Apply to special surfaces (\*): gypsum board, fiber cement board, wood, old brick surface interior-exterior area.

For the parking lot, factory, supermarket, basement, lobby.

For swimming pools, saunas, spas, ...

For exterior walls reach a height up to 8m in hotels, elevators, high-rise buildings, factories, ...

Out-of-the-box solution for tiling over existing interior/exterior tiles (brick on brick)

(\*) Note: Recommended to use weberprim 2 primer before using webertai A1000 for special surfaces.

### SPECIFICATIONS

Item	webertai A1000
Norm*	1.4 kg/m <sup>2</sup> /mm
Specific weight	~1.4 g/cm <sup>3</sup>
Time for the chemical ingredients to take full effect	3 mins
Time for mixing and use	4 hours
Visualized Open time	20 mins
Adjusting time	10 mins
Waiting time before grouting	24 hours
Thickness	3-10 mm

\*Norm for reference only: 1.4kg/m<sup>2</sup> for 1mm thickness (minimum thickness 3mm)  
The actual rate depends on the substrate surface, tile size and workmanship.

### SPECIFICATION AND PRESERVATION

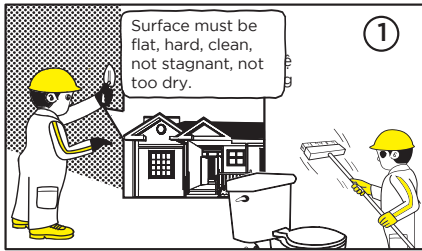
<b>Packing:</b>	40kg/unit
<b>Colours:</b>	Grey
<b>Shelf life and storage:</b>	Within 1 year from date of manufacture in unopened packaging and stored in a dry, well-ventilated area.  If the package has been opened, it should be stored tightly closed and in a dry, ventilated area and should be inspected prior to use.

### QUALITY CERTIFICATION

	Standard	webertai A1000	Test method
Tensile adhesion strength after 28 days	≥ 1.0 (N/mm <sup>2</sup> )	Pass	ISO 13007-2 part 4.4.4.2 and EN 1348-8.2
Tensile adhesion strength after water immersion after 28 days	≥ 1.0 (N/mm <sup>2</sup> )	Pass	ISO 13007-2 part 4.4.4.3 and EN 1348-8.3
Tensile adhesion strength after heat aging	≥ 1.0 (N/mm <sup>2</sup> )	Pass	TCVN 7899-2/ ISO 13007-2 part 4.4.4.4 and EN 1348-8.4
Tensile adhesion after freeze-thaw cycles	≥ 1.0 (N/mm <sup>2</sup> )	Pass	TCVN 7899-2/ ISO 13007-2 part 4.4.4.5 and EN 1348-8.5
Open time	~20 mins	Pass	TCVN 7899-2/ ISO 13007-2 part 4.1 and EN 1346
Deformation	S1 2.5mm ≤ S ≤ 5mm	Pass	ISO 13007-2 part 4.5 and EN 12002

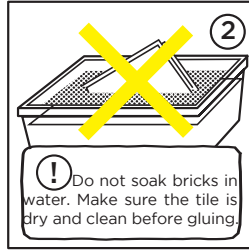
## SUBSTRATE PREPARATION

### SURFACE PREPARATION



①

### PREPARE TILE



②

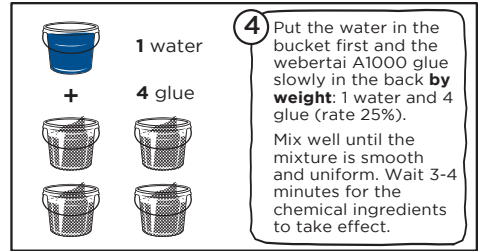
### PREPARE TOOLS



③

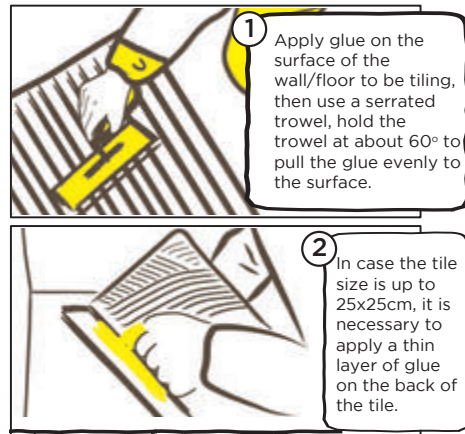
Weber serrated trowel.

### PRODUCT PREPARATION



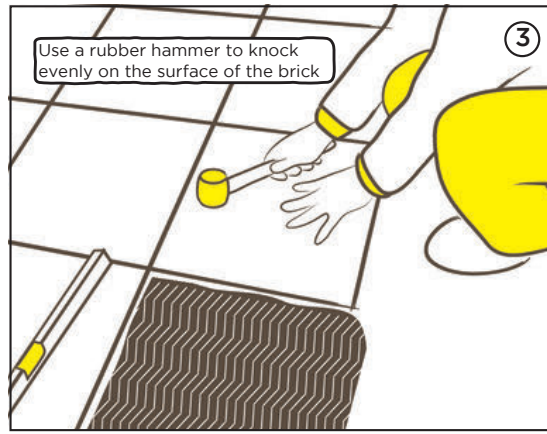
④

## CONSTRUCTION METHOD



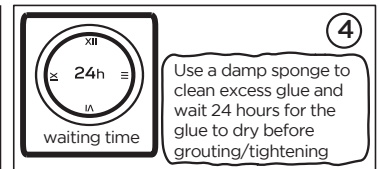
①

Apply glue on the surface of the wall/floor to be tiling, then use a serrated trowel, hold the trowel at about 60° to pull the glue evenly to the surface.



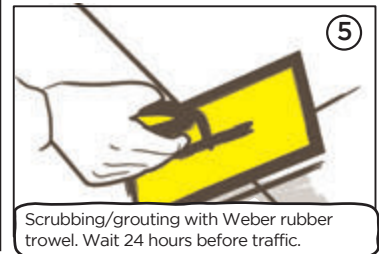
③

Use a rubber hammer to knock evenly on the surface of the brick



④

Use a damp sponge to clean excess glue and wait 24 hours for the glue to dry before grouting/tightening



⑤

Scrubbing/grouting with Weber rubber trowel. Wait 24 hours before traffic.

## APPLICATION NOTE FOR TILE/STONE

- For large stones, it is recommended to spread a thin layer of webertai A1000 glue on the back of the stone to ensure that the glue and stone are well bonded, increasing adhesion.
- Do not apply glue in patches behind the tile. This way of plastering will create a space under the tile and cause cracking, water infiltration and peeling later.
- The glue mixture should be used up within the specified time. Avoid using glue on overheated substrates and limit direct sunlight.

## HEALTH SAFETY INFORMATION

- The composition contains cement, so it can cause allergies when in contact. Contact with wet grout can cause dermatitis, burning or irritation. Similarly, in cases when the body produces too much fluid (e.g. sweating or watery eyes) there is also a case of dermatitis, burning or burning.
- Avoid direct contact with skin or eyes. Limit dust flying and avoid breathing dust directly during construction.
- In case of contact with the body, wash with plenty of clean water.
- Should wear gloves and glasses when working.
- Keep out of reach of children.

## Product recommendation

For cases of	Tiling interior walls of more than 8m high	Ceramic and stone tiling to prevent tarnishing or yellow stains	Tiling over existing tiles or existing painted surfaces	Tiling over fiber cement boards or wooden surface	Tiling over gypsum board	Tiling over metal or plastic surfaces
Recommended products	webertai A1000 tile adhesive	webertai no-stain tile adhesive	webertai A800 webertai A600 + webertai A1000 tile adhesive	weberprim 2 (as primer) and webertai A1000 tile adhesive	webertai A1000 tile adhesive	weberpox easy tile adhesive and grout

### Disclaimer:

The information related to Weber products is provided and recommended based on our knowledge and experience under proper storage, testing, and use conditions. In actual application, due to differences in materials, aggregates, and actual site conditions, we cannot guarantee any particular purposes of the product, or any liability for the information, recommendations, or advice from our part. Users need to consult the latest documentation provided as well as check the suitability of the product for the desired application purpose.