



weberdry top

2-Component FLEXIBLE waterproofing product



**Cost-saving and
easy to apply
with roller**

**New formula for
better flexibility**

PACKAGING AND STORAGE

Packaging: 5kg, 15kg/set

Color: Part A: Grey powder
Part B: Milky white liquid

Shelf life and storage: 9 months from the date of manufacture in sealed containers.
If the packaging has been opened, it must be stored in a closed container and kept in a dry, well-ventilated area and need to check before use



Application:

Suitable for balcony areas
For bathrooms, kitchens, hallways, swimming pools, wet areas
For gypsum board, fiber cement board, special surfaces such as lightweight brick walls, and other building structures that are subject to structural movement
Safe for human-used water tanks

- High flexibility and good coverage for cracks of about 1.5mm in width
- Resistant to water pressure at a depth of 30m with 1.5mm waterproof membrane thickness after drying
- Resistant to hard water (high in inorganic salts) and chlorinated water
- Good bonding
- Safe for human-used water tanks
- Low VOCs - safe for human's health

TECHNICAL SPECIFICATIONS

Specification	Weberdry Top	
Composition	15kg set	5kg set
Part A: Grey powder	3,33 kg/bag x 3	3.33 kg / bag
Part B: Milky white liquid	1,67 kg/bag x 3	1.67 kg / bag
Average consumption rate*		Wet area: ~2.5kg/m ² /2 coats Water tank: ~3.5kg/m ² /2 coats (depend on substrate conditions)
Crack bridging ability	BS EN 14891:2017	≥ 0.75Mm (standard condition)
Pot life		~30 minutes at 30°C
Dry time for 1st coat		~3 hours at 30°C
Dry time for 2nd coat		~3 hours at 30°C
Adhesive strength (concrete)	ASTM 7234-21	≥ 1 N/mm ²
Waterproofing with 1.5mm membrane thickness	BS EN 14891:2017	Impermeable at 3 bar pressure over 7 days
Adhesive strength after heat aging	BS EN 14891:2017	≥ 0.5 N/mm ²
Adhesive strength after contact with water	BS EN 14891:2017	≥ 0.5 N/mm ²
Adhesive strength after contact with lime water	BS EN 14891:2017	≥ 0.5 N/mm ²

*These are lab results. Actual consumption depends on improvements and site conditions.

APPLICATION INSTRUCTION

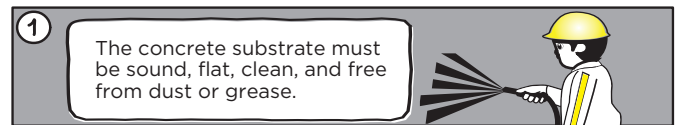
weberdry top

TOOL PREPARATION

- Grinder, wire scratch brush, trowel, roller, brush, mixer
- Other tools or equipment for waterproofing in appropriate areas

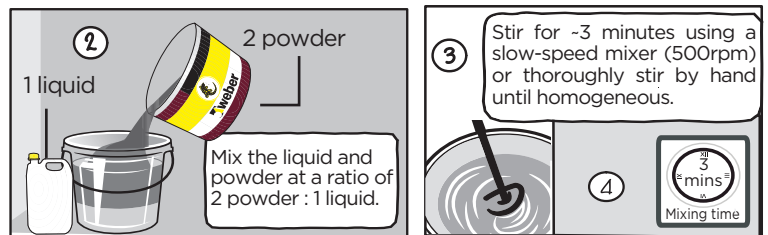
SUBSTRATE PREPARATION

- The concrete substrate must be sound, flat, clean, and free from dust or grease.
- Substrate must be saturated thoroughly without stagnant water.



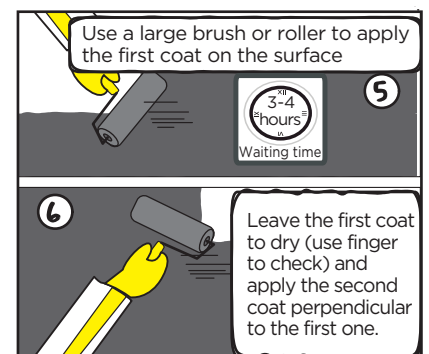
MIXING

- Shake part B (liquid) before use.
- Pour the liquid part into a clean mixing tank.
- Slowly add the powder part to the liquid tank at the ratio of 1:2 (liquid:powder)
- Use a slow-speed mixer (500 rpm) to stir the mixture the around 3 minutes until homogeneous and lump-free.



APPLICATION

- Use a roller to apply the first coat on the whole surface and leave to dry (use your finger to check if coat is sticky or not). Apply the second coat perpendicular to the first one.
- Use the elastic and waterproofing webertape BE14 along the grout lines and floor-wall joint lines. Apply 1 coat of weberdry Top at joints, edges; apply the webertape at those positions, then rub to ensure no air or water bubbles are left and the tape adheres firmly to the waterproofing coat. Leave to dry then apply the second coat perpendicular to the first one.



CURING

- The surface must be protected for at least 3 days to make sure the waterproofing cure completely and to limit shrinkage.



CLEANING OF TOOL

- Clean all tools and equipment by water immediately after use. Hardened mortar can only be removed mechanically.

APPLICATION NOTE

- Avoid applying under intense sunlight and strong winds.
- In areas with rapid infiltration rate, 3 waterproofing coats are required.
- Do not walk on the waterproofing coat, even if it has cured as it may affect the waterproofing effectiveness.

SAFETY PRECAUTIONS

- Avoid direct contact with skin or eyes. Immediately wash your eyes upon contact and consult a doctor.
- Keep the product out of children reach.
- For further information and recommendations regarding the safe handling, storage and disposal of chemical products, users should refer to the latest safety data sheet containing physical, chemical, toxicological, ecological and other safety related data.

Disclaimer:

The information related to Weber products is provided and recommended based on our knowledge and experience under standard storage, testing and use conditions. In actual application, due to differences in materials, aggregates and actual site conditions, we cannot guarantee any particular purposes of the product, or any liability for the information, recommendations or advices from our part. Users need to consult the latest documentation provided as well as check the suitability of the product for the desired application purpose.