



## Antibacterial Tile Grout

**webercolor power**

### FEATURES

- The product meets CG2WA standards according to the National Standard TCVN 7899-3 and European Standard BS EN 13888.
- A collection of various grout colors.
- Resistant to mold, black algae, and bacteria thanks to advanced technology.
- Resistant to typical cleaning chemicals.
- Non-scratching on tile surfaces during cleaning and maintenance.
- Durable with grout lines ranging from 1 to 6 mm wide, without cracking.
- Product meets “**LOW-EMITTING MATERIALS**” credit of the green building standard, such as **LEED, LOTUS...**

### INGREDIENTS:

- Contains cement and other additives.

### PRODUCT INFORMATION

**Packaging:** 1 kg/ package;  
24 packages/ container

**Color:** Various colors

**Shelf life and storage:** Within 1 year from the date of manufacture, provided the packaging remains intact and the product is stored in a dry, well-ventilated area. Once opened, the product must be sealed tightly and stored in a dry, ventilated area, and checked before reuse.



### USES:

- For ceramic, porcelain, terracotta tiles, glass mosaics, marble, and other types of natural stone surfaces, etc.
- For floors and walls in interior areas, dry areas, and wet areas such as bathrooms, kitchens, etc.

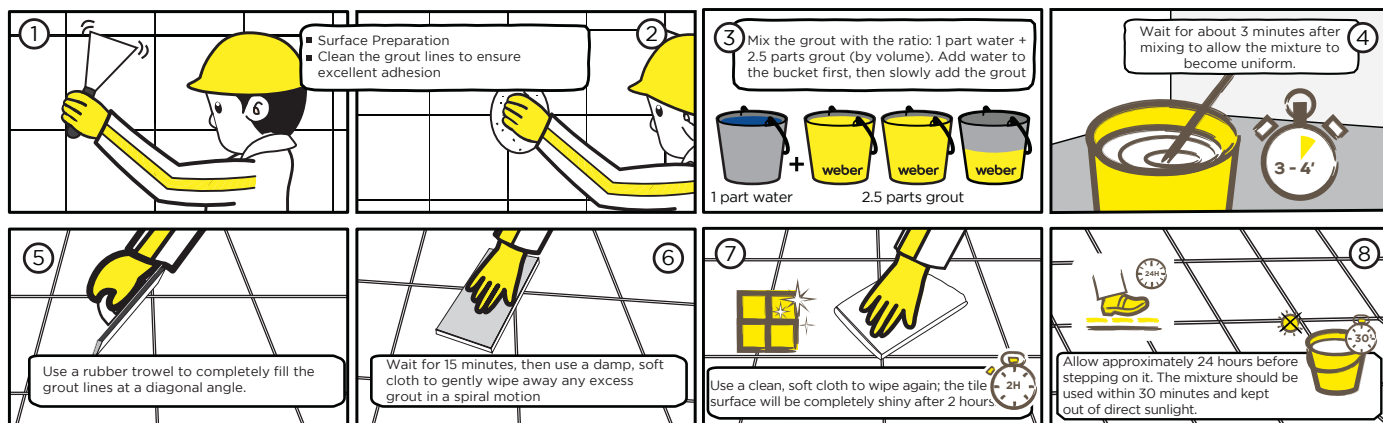
### TYPICAL PROPERTIES

Indicators	Values	Test methods
Average consumption rate*	~0.2 kg/m <sup>2</sup>	-
Density	~ 0.9 - 1.1 g/cm <sup>3</sup>	-
Time for chemical components to activate fully	3- 4 minutes	-
Mixing and usage time	30 minutes	-
Waiting time for grouting after tiling	24 hours	-
Width of grout	1 - 6 mm	-
Waiting time before traffic can resume	24 hours	-
Abrasion resistance	≤ 1000 mm <sup>3</sup>	BS EN 12808-2/3/4/5 Or TCVN 7899-4 (ISO 13007-4)
Flexural strength under standard conditions	≥ 2.5 (N/mm <sup>2</sup> )	BS EN 12808-2/3/4/5 Or TCVN 7899-4 (ISO 13007-4)
Flexural strength after freeze-thaw cycles	≥ 2.5 (N/mm <sup>2</sup> )	BS EN 12808-2/3/4/5 Or TCVN 7899-4 (ISO 13007-4)
Compressive strength under standard conditions	≥ 15 (N/mm <sup>2</sup> )	BS EN 12808-2/3/4/5 Or TCVN 7899-4 (ISO 13007-4)
Compressive strength after freeze-thaw cycles	≥ 15 (N/mm <sup>2</sup> )	BS EN 12808-2/3/4/5 Or TCVN 7899-4 (ISO 13007-4)
Shrinkage	≤ 3 (mm/m)	BS EN 12808-2/3/4/5 Or TCVN 7899-4 (ISO 13007-4)
The rate of water absorption declines after 30 minutes	≤ 2 g	BS EN 12808-2/3/4/5 Or TCVN 7899-4 (ISO 13007-4)
The rate of water absorption declines after 240 minutes	≤ 5 g	BS EN 12808-2/3/4/5 Or TCVN 7899-4 (ISO 13007-4)

\*The average consumption rate is for reference with a grout line width of 2mm. Actual consumption may vary depending on the construction method, grout width, and tile thickness.

\*Notes: The results are experimental from the laboratory and may vary due to different conditions and construction methods at the site.

## CONSTRUCTION GUIDE



## NOTES FOR GROUTING

- The grout mixture should be applied within 30 minutes after mixing and should be protected from direct sunlight.
- Avoid applying grout on excessively hot surfaces, and it is recommended to use a protective cover when working in direct sunlight to help lower surrounding temperatures.

## SAFETY AND HEALTH INFORMATION

- The product contains cement, which may trigger allergic reactions upon contact. Exposure to wet grout can lead to dermatitis, irritation, or burns. Additionally, excessive bodily secretions (such as sweating or tearing) may also result in dermatitis, irritation, or burns.
- Avoid direct contact with skin or eyes. Minimize dust generation and avoid inhaling dust during application.
- If the product comes into contact with your body, wash the affected area thoroughly with plenty of clean water.
- It is recommended to wear gloves and protective eye wear during application.
- Keep out of reach of children.

## COLOR CHART FOR REFERENCE\*



\*The above color chart represents typical colors for reference, the actual color of the product may differ. Please contact a Weber representative for detailed consultation.

### Disclaimer:

Product information related to Weber is provided and recommended based on our knowledge and experience under proper storage conditions, testing, and use under standard conditions. In practical applications, due to differences in materials, aggregates and actual site conditions, we do not guarantee that the product will be suitable for any specific purpose, nor do we assume any legal liability for the information, recommendations, or advice provided by us. Users should refer to the latest documents provided by us and check the product's suitability for their intended construction purpose.