



Adhesive for Tiles/Stones Supreme

webertai A1000

FEATURES

- The product meets C2S1 standards according to the National Standard TCVN 7899-1 and European Standard BS EN 12004-1
- Excellent adhesion
- Able to withstand all weather conditions, pressure, and vibrations for a short period.
- Consistent quality
- Product meets **"LOW-EMITTING MATERIALS"** credit of the green building standard, such as **LEED, LOTUS...**

INGREDIENTS:

- Contains sand, cement, and other additives

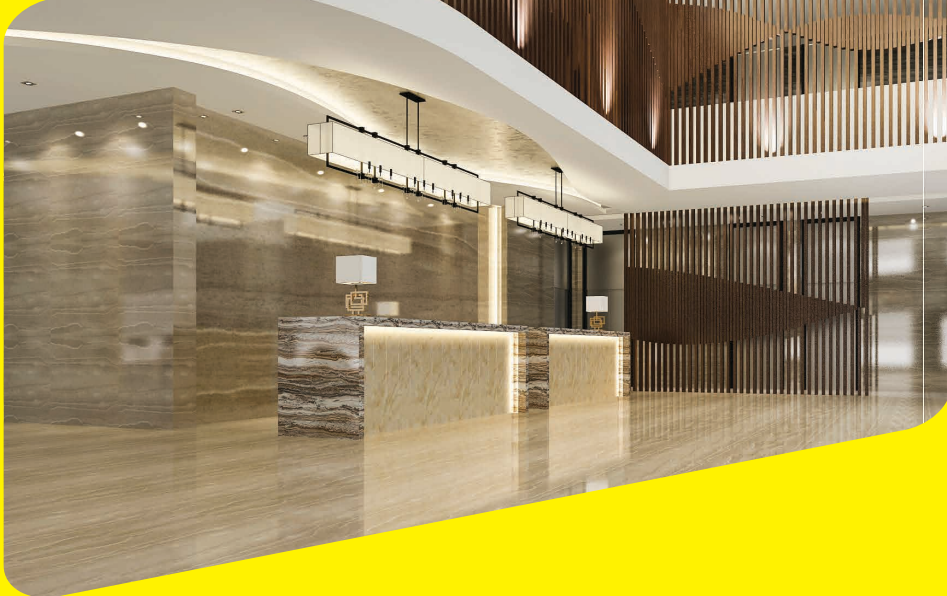
PRODUCT INFORMATION

Packaging: 40 kg bag

Color: Grey

Shelf life and storage:

- Within 1 year from the date of manufacture, provided the packaging remains intact and the product is stored in a dry, well-ventilated area.
- Once opened, the product must be sealed tightly and stored in a dry, ventilated area checked before reuse.



USES:

- Suitable for all types of tiles/stones: ceramic, porcelain, ceramic/glass mosaic, granite, marble, natural stones...
- Floor tiling
 - Interior areas such as living rooms, bedrooms, offices, etc. and exterior areas like gardens, roofs, etc. with a variety of tiles/stones in different sizes.
 - Areas with heavy load-bearing, vibrations, and high traffic density, such as parking lots, factories, supermarkets, basements, and lobbies, etc.
 - Areas with high-pressure conditions such as steam rooms, spas, etc.
- Wall cladding
 - Interior and exterior areas with a height of up to 28 meters (*).
 - Special surfaces such as fiber cement boards, gypsum boards (**).
 - Existing tile surfaces or previously painted surfaces (**).

* For guidance on tile or stone types, sizes, and cladding heights, please reach out to Weber technical support.

** Refer to the Product Recommendations section for more details.

TYPICAL PROPERTIES

Indicators	Values	Test Methods
Average consumption rate*	1.4 kg/m ² /mm	-
Volume	1.4-1.7 g/cm ³	-
Time for chemical components to activate fully	3 minutes	-
Mixing and usage time	4 hours	-
Tile adjustment time	10 minutes	-
Waiting time before grouting	24 hours	-
Required thickness	3-10 mm	-
Tensile adhesion strength	≥ 1 (N/mm ²)	BS EN 12004-2 or TCVN 7899-2 (ISO 13007-2)
Tensile adhesion strength after immersion in water	≥ 1 (N/mm ²)	BS EN 12004-2 or TCVN 7899-2 (ISO 13007-2)
Tensile adhesion strength after heating	≥ 1 (N/mm ²)	BS EN 12004-2 or TCVN 7899-2 (ISO 13007-2)
Tensile adhesion strength after freeze-thaw cycles	≥ 1 (N/mm ²)	BS EN 12004-2 or TCVN 7899-2 (ISO 13007-2)
Lateral deformation	S1 2.5mm ≤ S ≤ 5mm	BS EN 12004-2 or TCVN 7899-2 (ISO 13007-2)
Opening time: tensile adhesion strength	≥ 0.5 N/mm ² after at least 20 minutes	BS EN 12004-2 or TCVN 7899-2 (ISO 13007-2)

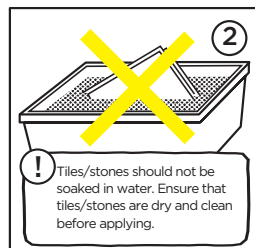
*Consumption rate for reference: 1.4 kg/m² for a thickness of 1 mm (minimum thickness of 3 mm)
The actual consumption rate depends on the substrate surface, tile size, and the skill of the worker.

PREPARATION

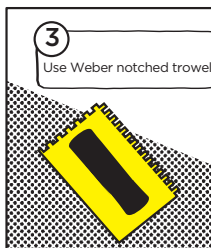
SURFACE PREPARATION



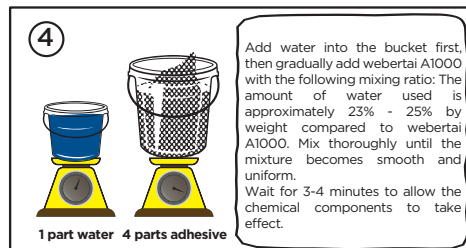
TILES/STONES PREPARATION



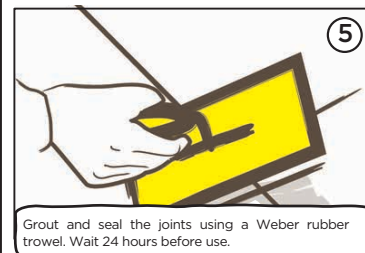
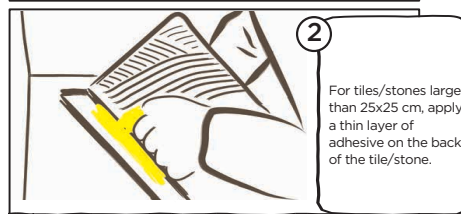
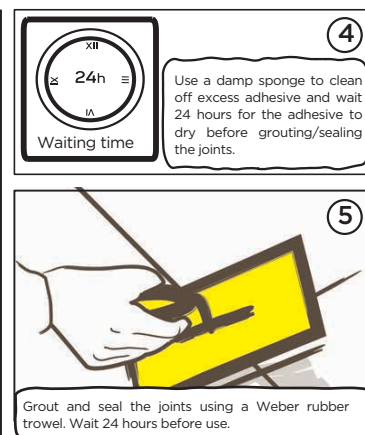
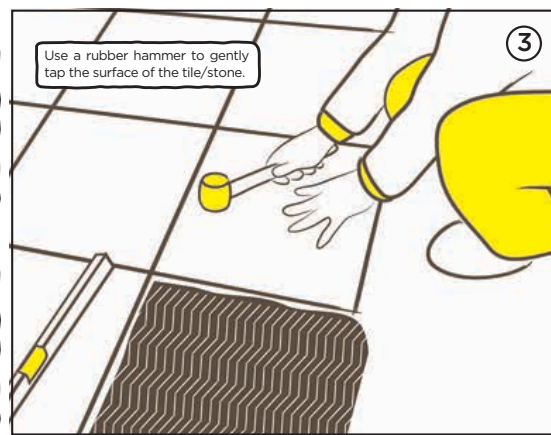
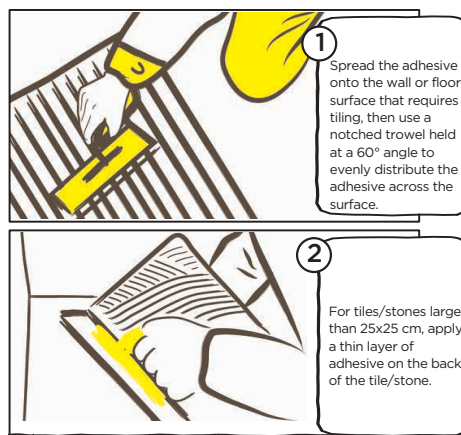
TOOL PREPARATION



PRODUCT PREPARATION



CONSTRUCTION METHODS



NOTES WHEN APPLYING TILES/STONES

- For larger tiles or stones, a thin layer of webertai A1000 should be applied to the back of the tile or stone to ensure strong adhesion between the adhesive and the tile or stone, enhancing bonding strength.
- Avoid applying the adhesive in patches on the back of the tiles/stones. This method will create gaps underneath, leading to cracks, water infiltration, and eventual peeling.
- Make sure to use the adhesive mixture within the specified time frame. Refrain from applying the adhesive on excessively hot surfaces and minimize exposure to direct sunlight.

SAFETY AND HEALTH INFORMATION

- The product contains cement, which may trigger allergic reactions upon contact. Exposure to wet grout can lead to dermatitis, irritation, or burns. Additionally, excessive bodily secretions (such as sweating or tearing) may also result in dermatitis, irritation, or burns.
- Avoid direct contact with skin or eyes. Minimize dust generation and avoid inhaling dust during application.
- If the product comes into contact with your body, wash the affected area thoroughly with plenty of clean water.
- It is recommended to wear gloves and protective eye wear during application.
- Keep out of reach of children.

PRODUCT RECOMMENDATIONS

Applications	Apply tiles/stones on interior walls that are higher than 8 meters.	Apply tiles/stones to prevent staining or yellowing.	Apply tiles/stones over existing tile surfaces or previously painted surfaces.	For tiling/stone installation on special surfaces, such as fiber cement boards, plasterboards, etc.	For tiling/stone installation on metal or plastic surfaces
Product Recommendations	Adhesive for tiles/stones webertai A1000	Adhesive for tiles/stones webertai no-stain	Adhesive for tiles/stones webertai A800 webertai 1000	Use a primer (weberdry top/weberdry seal pro/weberprim 2...) and adhesive for tiles/stones webertai A600/ webertai A800/ webertai A1000	Adhesive for tiles/stones and grouting weberepox easy

Disclaimer:

Product information related to Weber is provided and recommended based on our knowledge and experience under proper storage conditions, testing, and use under standard conditions. In practical applications, due to differences in materials, aggregates and actual site conditions, we do not guarantee that the product will be suitable for any specific purpose, nor do we assume any legal liability for the information, recommendations, or advice provided by us. Users should refer to the latest documents provided by us and check the product's suitability for their intended construction purpose.