



## Adhesive for tiles/stones Premium quality **webertai A600**

### FEATURES

- The manufacture of the product is in accordance with the National Standard TCVN 7899-1 and European Standard BS EN 12004-1
- Excellent adhesion
- Support waterproofing capability
- Consistent quality
- Product meets “**LOW-EMITTING MATERIALS**” credit of the green building standard, such as **LEED, LOTUS**...

### INGREDIENTS:

- Contains sand, cement, and other additives

### PRODUCT INFORMATION

**Packaging:** 40 kg bag

**Color:** Grey, white

**Shelf life and storage:**

- Within 1 year from the date of manufacture, provided the packaging remains intact and the product is stored in a dry, well-ventilated area.
- Once opened, the product must be sealed tightly and stored in a dry, ventilated area checked before reuse.



### USES:

- Suitable for various types of tiles/stones: ceramic, porcelain, ceramic/glass mosaic, granite, marble, natural stones...
- Floor tiling
  - Interior areas such as living rooms, bedrooms, offices, etc. and exterior areas with roof coverings: loggias, drying areas, etc. can accommodate tile or stone sizes of 60x60 cm and 80x80 cm...
  - For exterior areas with low foot traffic, tile or stone sizes of 40x40 cm, 60x60 cm... are suitable, and for small swimming pool areas under 50 m<sup>2</sup> with a depth not exceeding 2 meters.
- Wall cladding:
  - Interior areas with a height of up to 8m and exterior areas with a roof covering (\*).
  - Special surfaces such as fiber cement boards, gypsum boards (\*\*).

\* For guidance on tile or stone types, sizes, and cladding heights, please reach out to Weber technical support.

\*\* Refer to the Product Recommendations section for more details.

### TYPICAL PROPERTIES

Indicators	Values	Test Methods
Average consumption rate*	1.4 kg/m <sup>2</sup> /mm	-
Volume	1.4-1.7 g/cm <sup>3</sup>	-
Time for chemical components to activate fully	3 minutes	-
Mixing and usage time	4 hours	-
Tile adjustment time	10 minutes	-
Waiting time before grouting	24 hours	-
Required thickness	3-10 mm	-
Tensile adhesion strength	≥ 1 (N/mm <sup>2</sup> )	BS EN 12004-2 or TCVN 7899-2 (ISO 13007-2)
Tensile adhesion strength after immersion in water	≥ 0.5 (N/mm <sup>2</sup> )	BS EN 12004-2 or TCVN 7899-2 (ISO 13007-2)
Tensile adhesion strength after heating	≥ 0.5 (N/mm <sup>2</sup> )	BS EN 12004-2 or TCVN 7899-2 (ISO 13007-2)
Tensile adhesion strength after freeze-thaw cycles	≥ 0.5 (N/mm <sup>2</sup> )	BS EN 12004-2 or TCVN 7899-2 (ISO 13007-2)
Opening time: tensile adhesion strength	≥ 0.5 N/mm <sup>2</sup> after at least 20 minutes	BS EN 12004-2 or TCVN 7899-2 (ISO 13007-2)

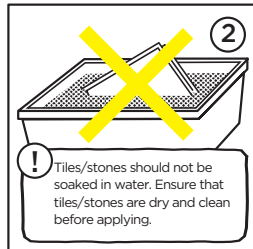
\*Consumption rate for reference: 1.4 kg/m<sup>2</sup> for a thickness of 1 mm (minimum thickness of 3 mm)  
The actual consumption rate depends on the substrate surface, tile size, and the skill of the worker.

## PREPARATION

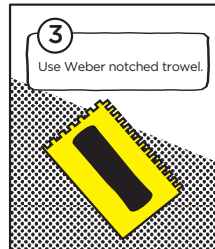
### SURFACE PREPARATION



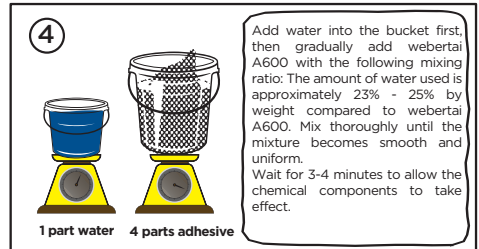
### TILES/STONES PREPARATION



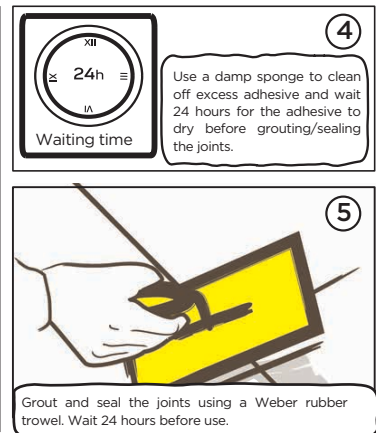
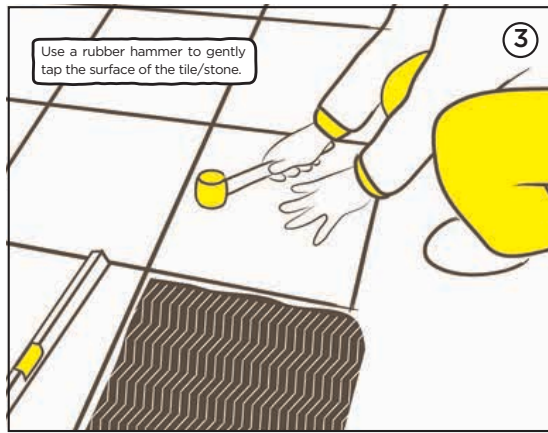
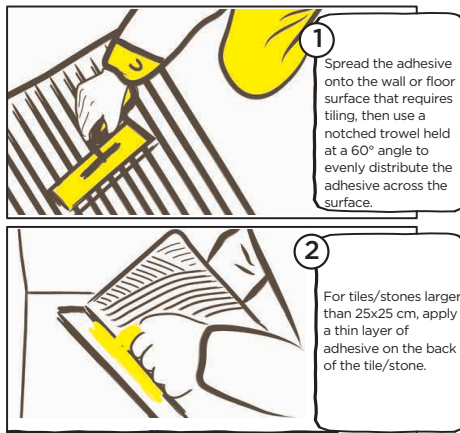
### TOOL PREPARATION



### PRODUCT PREPARATION



## CONSTRUCTION METHODS



## NOTES WHEN APPLYING TILES/STONES

- For larger tiles or stones, a thin layer of webertai A600 should be applied to the back of the tile or stone to ensure strong adhesion between the adhesive and the tile or stone, enhancing bonding strength.
- Avoid applying the adhesive in patches on the back of the tiles/stones. This method will create gaps underneath, leading to cracks, water infiltration, and eventual peeling.
- Make sure to use the adhesive mixture within the specified time frame. Refrain from applying the adhesive on excessively hot surfaces and minimize exposure to direct sunlight.

## SAFETY AND HEALTH INFORMATION

- The product contains cement, which may trigger allergic reactions upon contact. Exposure to wet grout can lead to dermatitis, irritation, or burns. Additionally, excessive bodily secretions (such as sweating or tearing) may also result in dermatitis, irritation, or burns.
- Avoid direct contact with skin or eyes. Minimize dust generation and avoid inhaling dust during application.
- If the product comes into contact with your body, wash the affected area thoroughly with plenty of clean water.
- It is recommended to wear gloves and protective eye wear during application.
- Keep out of reach of children.

## PRODUCT RECOMMENDATIONS

Applications	Apply tiles/stones on interior walls that are higher than 8 meters.	Apply tiles/stones to prevent staining or yellowing.	Apply tiles/stones over existing tile surfaces or previously painted surfaces.	For tiling/stone installation on special surfaces, such as fiber cement boards, plasterboards, etc.	For tiling/stone installation on metal or plastic surfaces
Product Recommendations	Adhesive for tiles/stones <b>webertai A1000</b>	Adhesive for tiles/stones <b>webertai no-stain</b>	Adhesive for tiles/stones <b>webertai A800</b> <b>webertai 1000</b>	Use a primer (weberdry top/weberdry seal pro/weberprim 2...) and adhesive for tiles/stones <b>webertai A600/</b> <b>webertai A800/</b> <b>webertai A1000</b>	Adhesive for tiles/stones and grouting <b>weberepox easy</b>

### Disclaimer:

Product information related to Weber is provided and recommended based on our knowledge and experience under proper storage conditions, testing, and use under standard conditions. In practical applications, due to differences in materials, aggregates and actual site conditions, we do not guarantee that the product will be suitable for any specific purpose, nor do we assume any legal liability for the information, recommendations, or advice provided by us. Users should refer to the latest documents provided by us and check the product's suitability for their intended construction purpose.